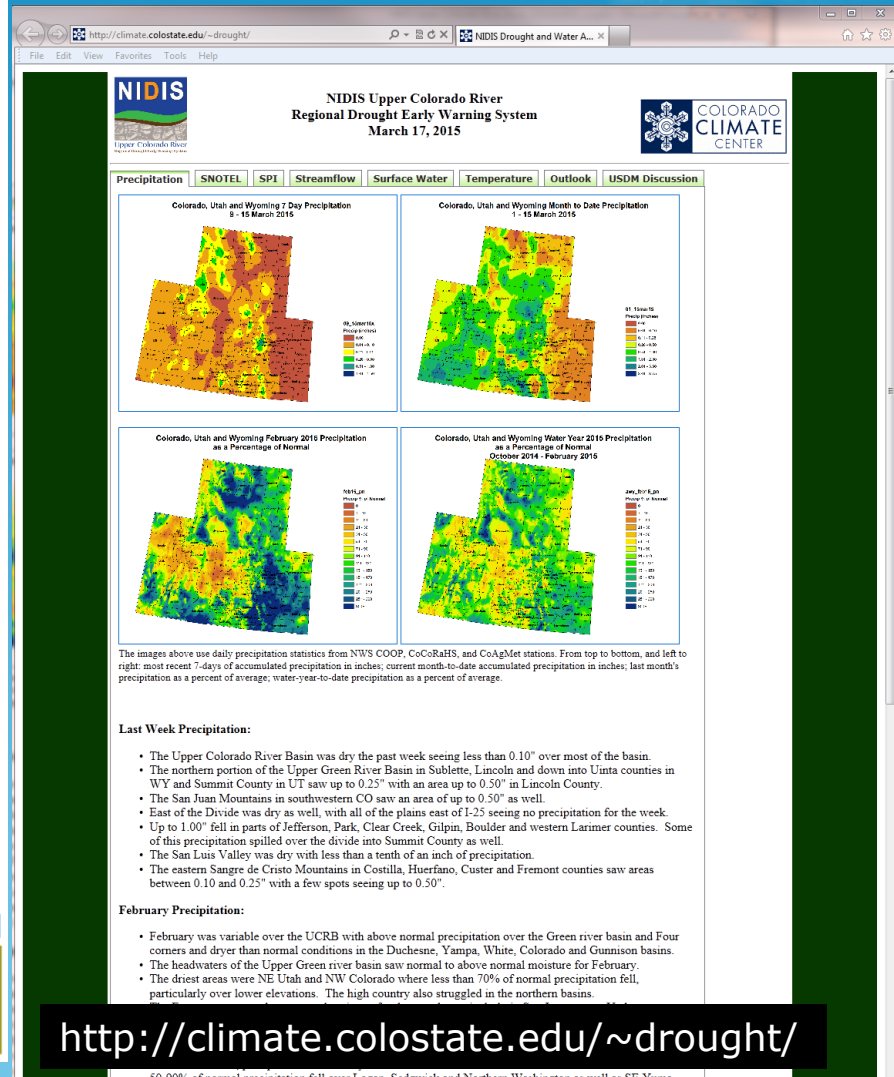


# UCRB Weekly Drought and Water Assessments



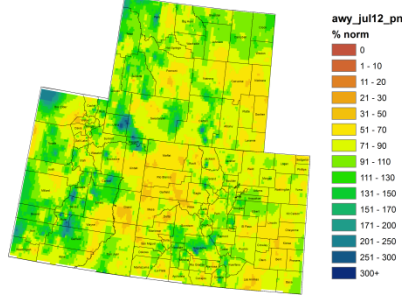
## Upper Colorado River Regional Drought Early Warning System

Weekly Climate, Water & Drought Assessment

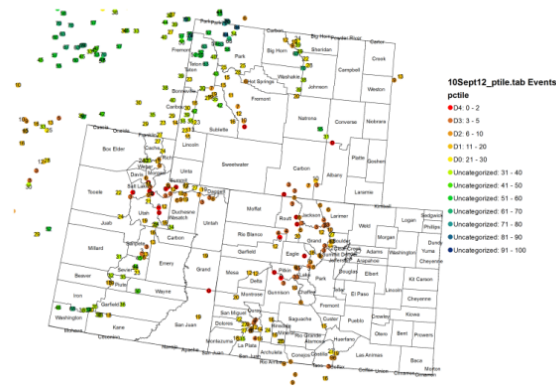


# We help put current conditions into historical perspective for diverse users

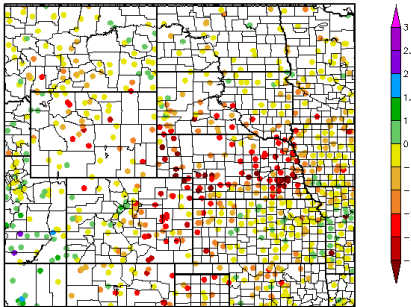
Colorado, Utah and Wyoming Water Year 2012 Precipitation as Percentage of Normal (Oct 2011 - July 2012)



Snotel Water Year Precipitation Percentile Ranking for 10 September 2012 (Stations with 15+ years of data only)

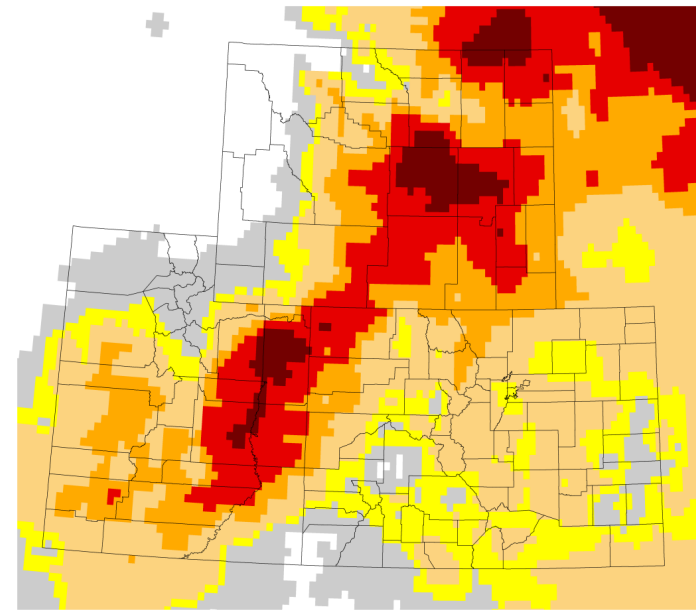
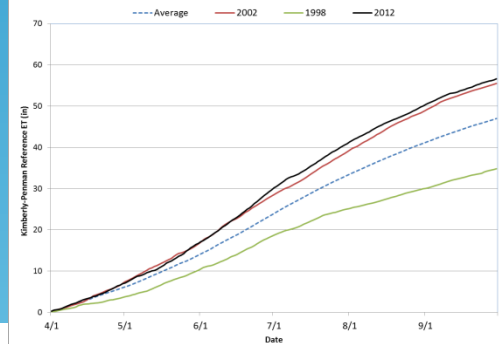


60 Day SPI  
7/13/2012 - 9/10/2012



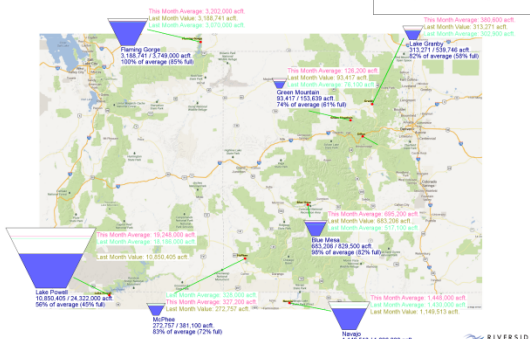
Generated 9/11/2012 at HPRCC using provisional data

Avondale Kimberly-Penman Reference ET (1993 - 2012)



01-week EDDI for 07/29/2015

- No drought
- Drying
- D0
- D1
- D2
- D3
- D4



RIVERSIDE

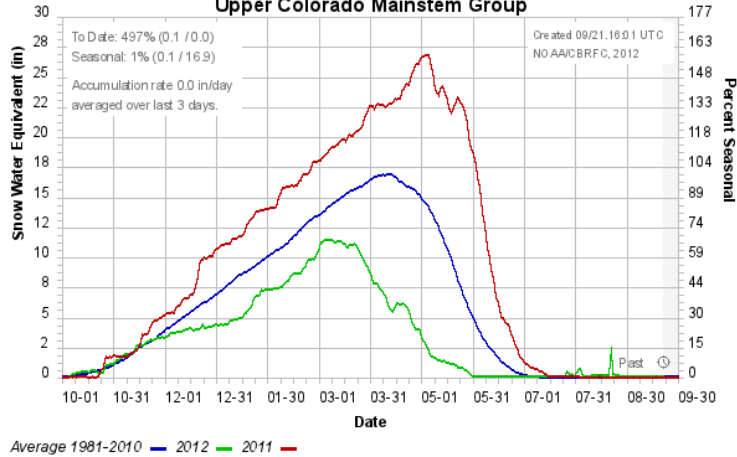
# Local and Regional Expertise

- Federal, state and local agencies provide updates on current conditions.
  - USGS puts streamflow data into context.
  - NWS provides weather forecasts
- Regional experts provide less frequent, but desirable updates.
  - CBRFC provides water supply and peak flow forecasts. We refer folks to CBRFC forecast webinars.
  - Klaus Wolter provides long range climate outlooks.

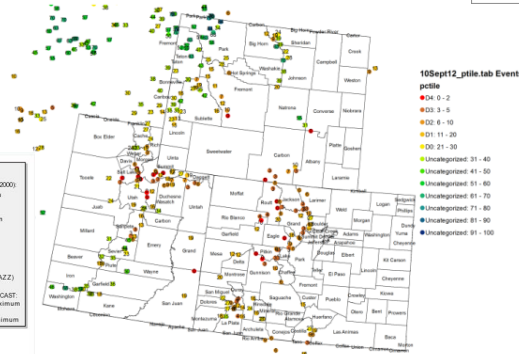
# Snowpack and runoff monitoring



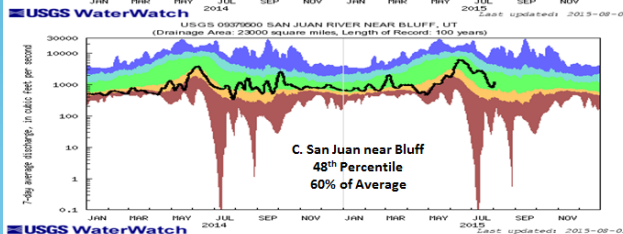
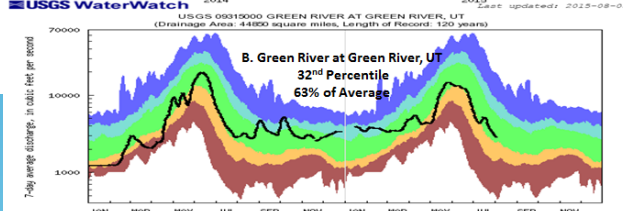
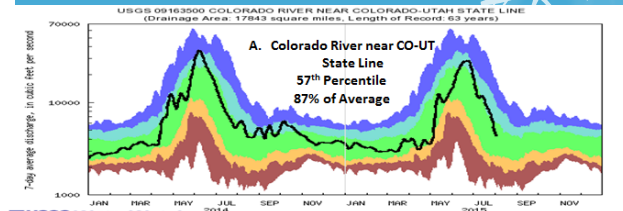
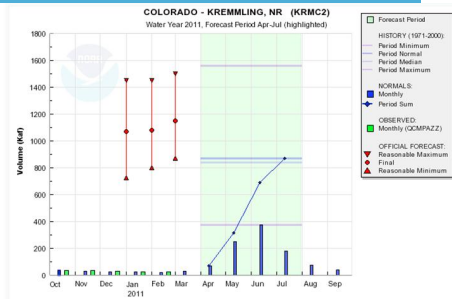
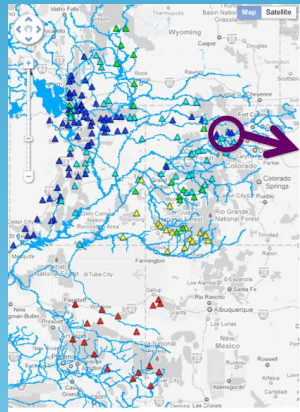
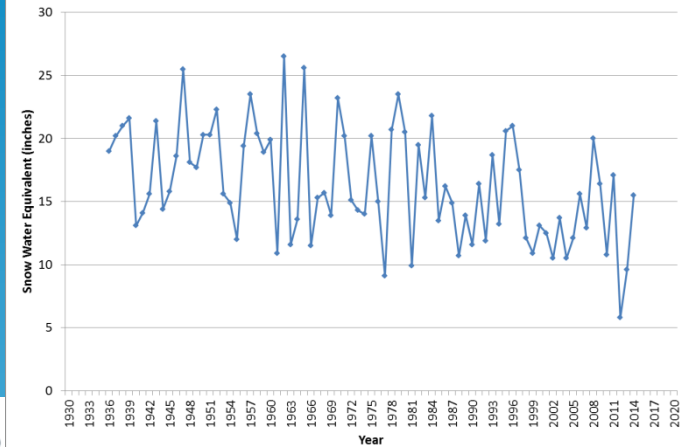
## Colorado Basin River Forecast Center Upper Colorado Mainstem Group



Snotel Water Year Precipitation Percentile Ranking for 10 September 2012 (Stations with 15+ years of data only)



## Independence Pass Snow Course April 1 Snow Water Equivalent





# On the ground reports of snowpack conditions help confirm data



Copper Mountain, CO March  
24, 2012  
Looking NE

Copper Mountain, CO March  
24, 2014  
Looking NE



# Weekly Drought and Water Assessment Webinars

- During critical times of year (Feb – July or times of major drought), weekly webinars are held at 10AM on Tuesday.
  - monthly through the rest of the year
- Normally 15-20 are on the call and the USDM sometimes joins
  - Greater attendance with long range climate outlooks/streamflow forecasts.
- Approximately 30 minutes, covering precipitation, snowpack conditions, streamflow, reservoir levels, evapotranspiration, soil moisture and NWS forecast.
- Ends with open discussion from all participants on recommended USDM changes

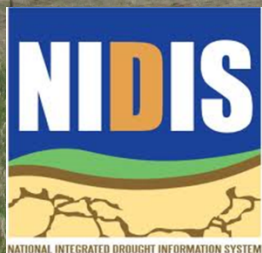
# Weekly Drought and Water Assessment Webinars

- Content is dynamic as conditions change
- Farm Service Agency and Extension contacts have been very useful for on the ground crop and grazing conditions
  - i.e. Does VegDRI depiction represent what is being observed on the ground?
- After the call, summaries are sent out to the entire list
- Suggestions and feedback are encouraged!



# If interested, we can put you on our weekly update list

## See me today





CoCoRaHS

**And don't forget – Join the  
Community Collaborative Rain, Hail and  
Snow Network**

**<http://www.cocorahs.org>**

or see me today

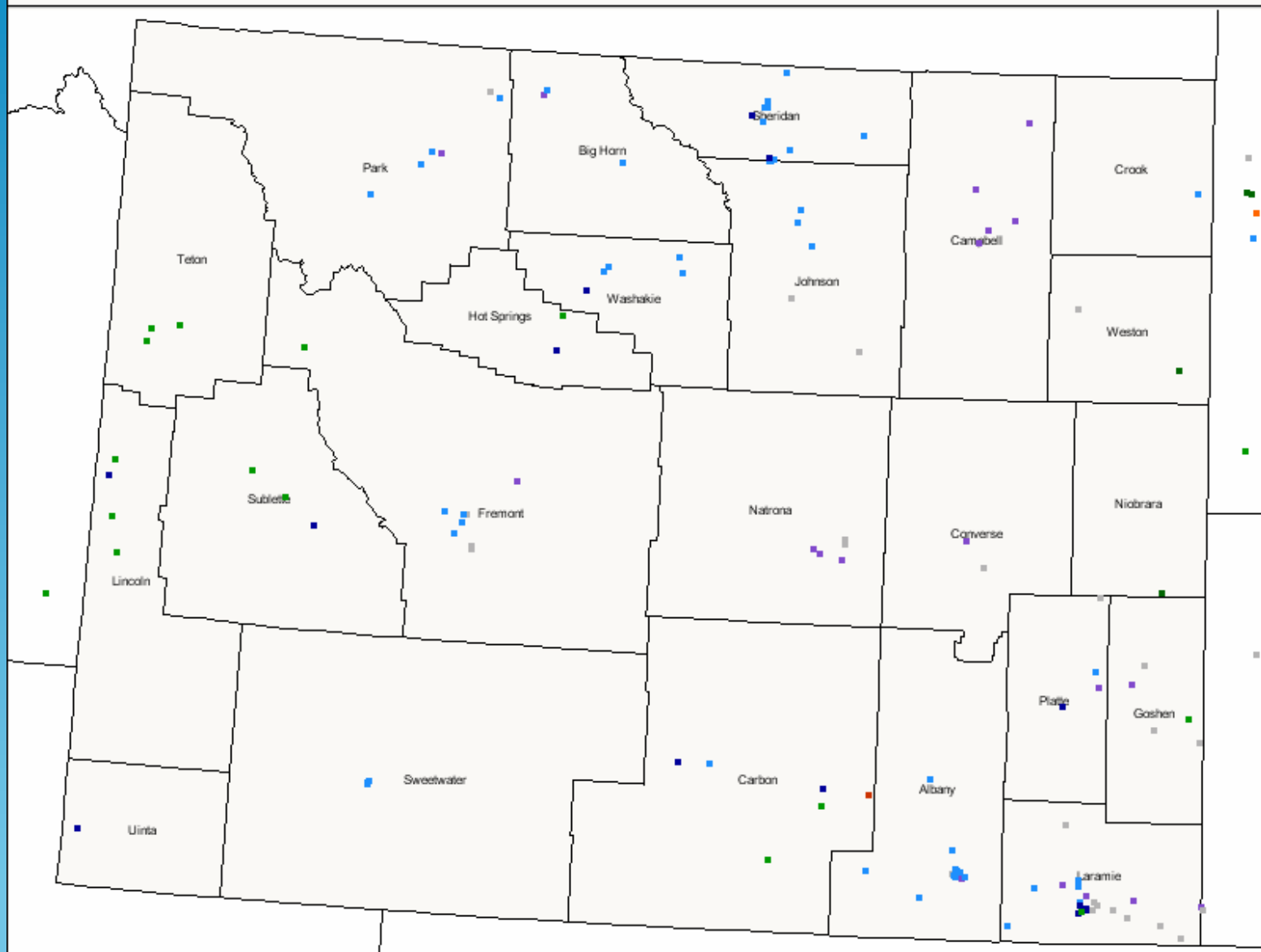


# There's room for you in CoCoRaHS

Daily Precipitation (inches x.xx), for the 24 hour period ending ~7:00 am

Wyoming 8/27/2015

0.0 Trace 0.01 - 0.10 0.11 - 0.20 0.21 - 0.49 0.50 - 1.17 1.18 - 1.76 1.77 - 1.95



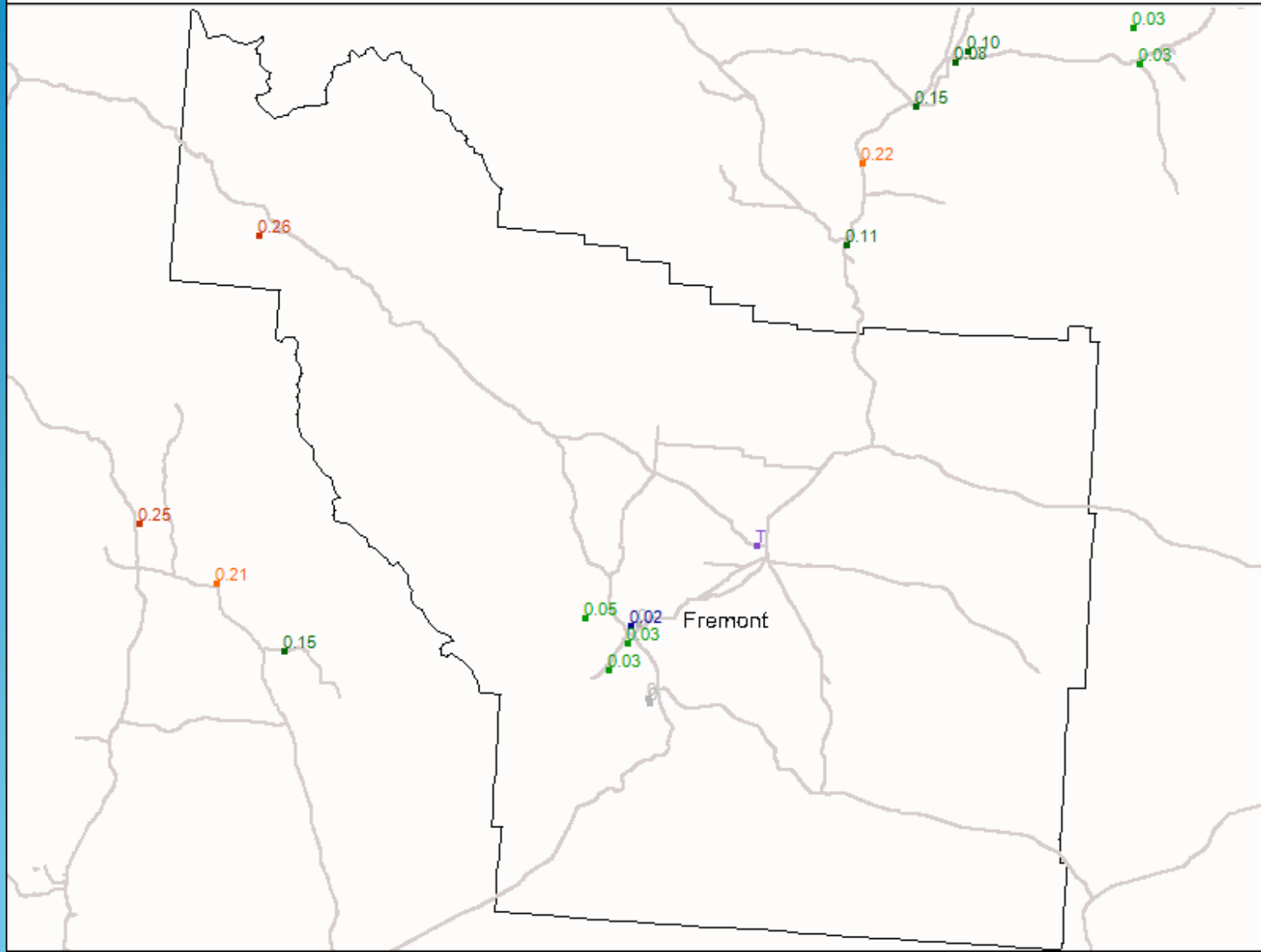
# This morning's reports



Daily Precipitation (inches x.xx), for the 24 hour period ending ~7:00 am

Fremont County, Wyoming 8/27/2015

0.0 Trace 0.01 - 0.01 0.02 - 0.02 0.03 - 0.06 0.07 - 0.15 0.16 - 0.23 0.24 - 0.26





# Colorado Climate Center

Nolan.Doesken@Colostate.edu

