

Mountain Pine Beetle Science Symposium: Impacts on the Hydrologic Cycle and Water Quality

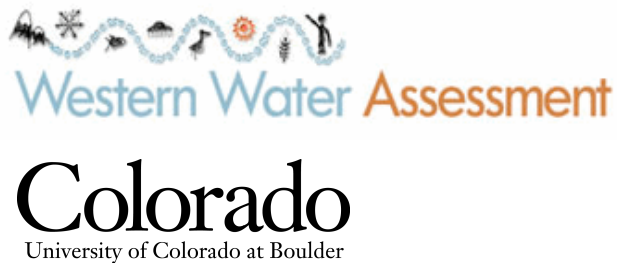


NCAR Mesa Lab

Boulder, CO – April 8, 2010



Western Water Assessment (WWA)

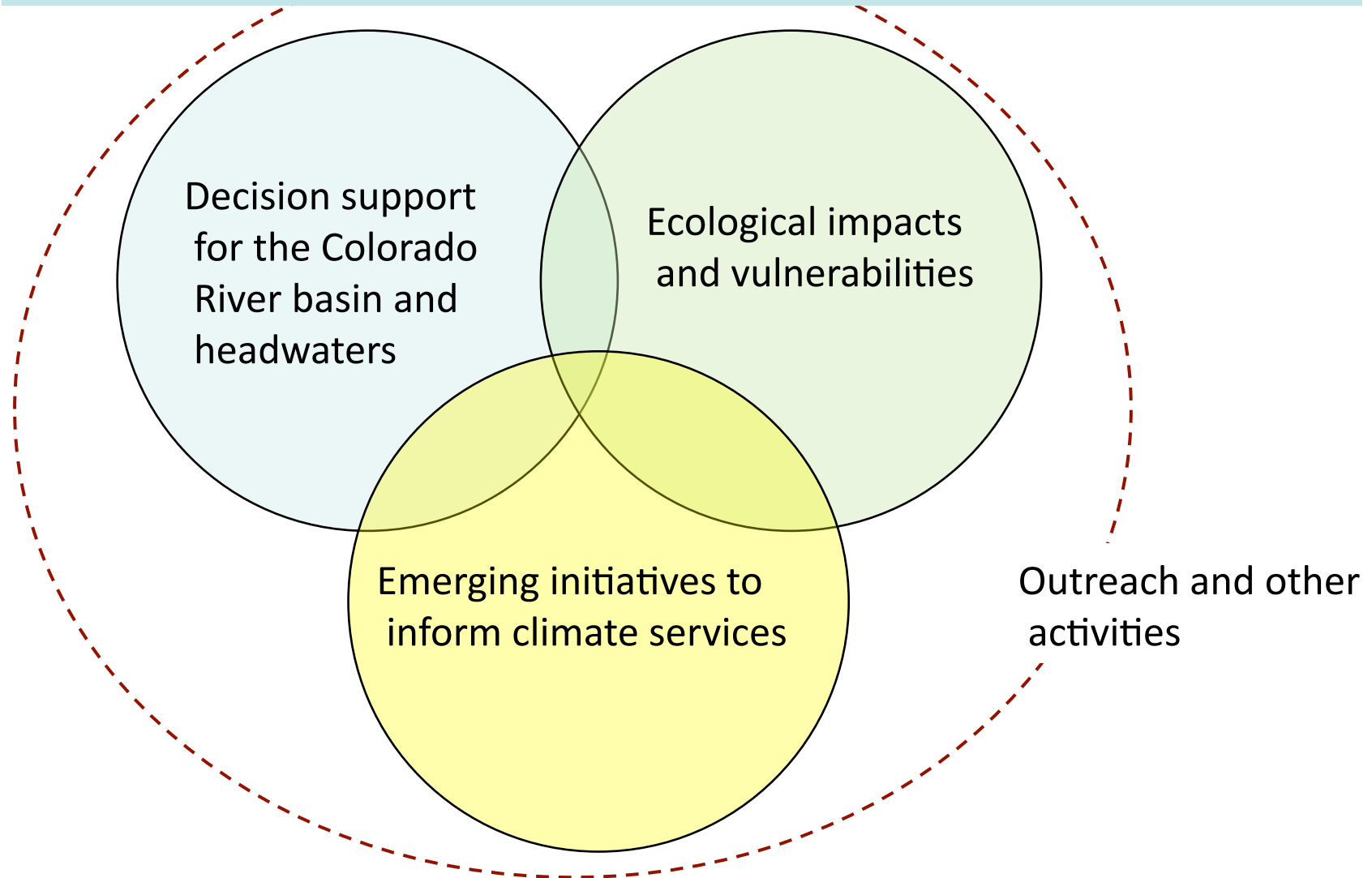


We provide decision-support information to stakeholders who manage climate-sensitive resources in Colorado, Utah, Wyoming

- Joint CU-NOAA program, sponsored researchers from multiple disciplines assisted by 4 full-time staff
- We work directly with stakeholders to frame research questions and develop climate planning strategies
- Stakeholders/partners: Bureau of Reclamation, Denver Water, Colorado Water Conservation Board, US Forest Service, Bureau of Land Management, and many others

Western Water Assessment (WWA)

Three **research themes** for 2010 and beyond:



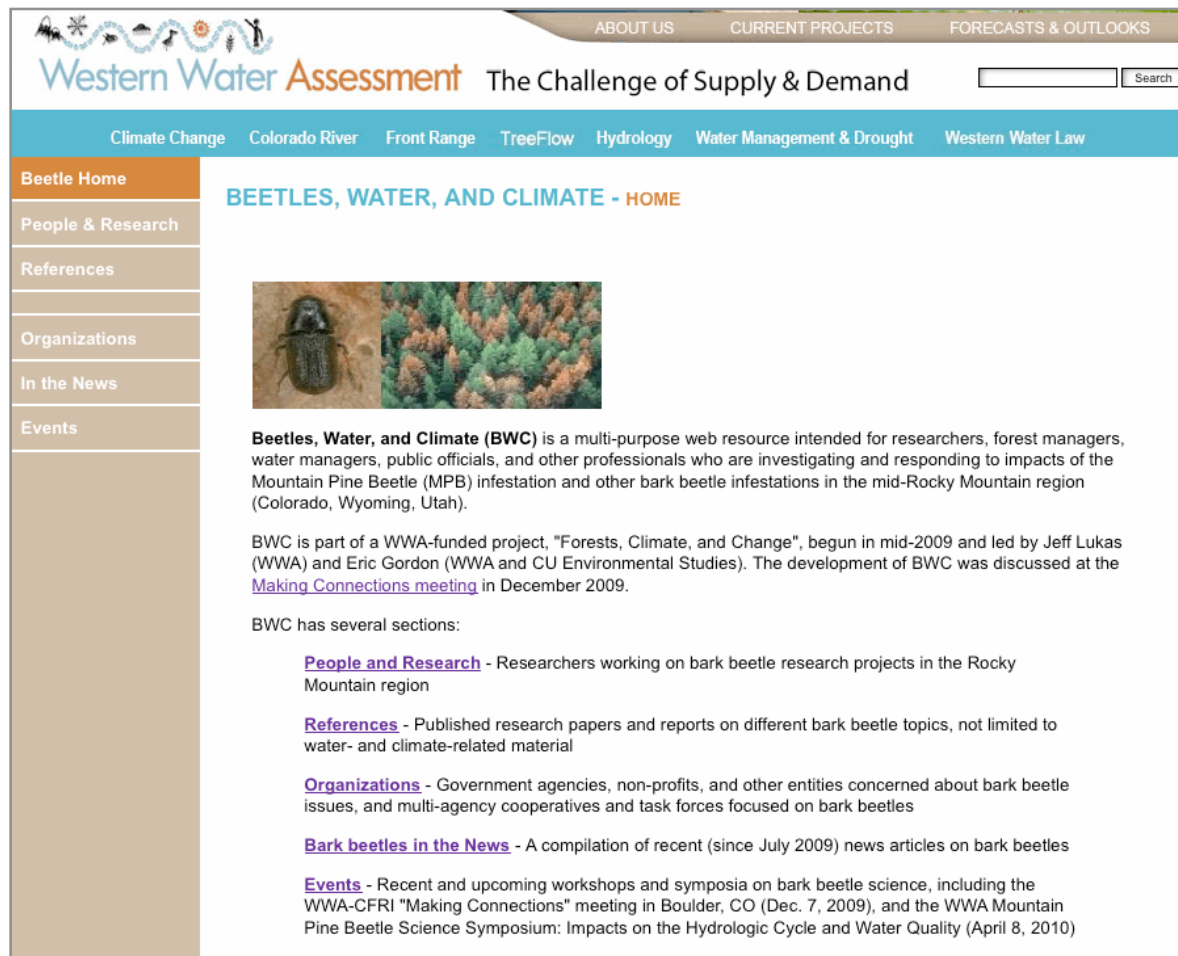
WWA Project: “Forests, Climate, and Change”

2009-2010 Objectives:

- Outreach to connect WWA and water managers to other MPB stakeholders
- Convene MPB scientist-stakeholder meeting (December 7, 2009)
- Draft science-synthesis reports on (1) MPB-water impacts and (2) climate influences on MPB infestation
- Develop web pages at WWA to serve as info clearinghouse on MPB-water-climate issues
- Convene beetles-water science symposium (*today*)

Beetles, Water, and Climate web pages

<http://wwa.colorado.edu/ecology/beetles/>



The screenshot shows the Western Water Assessment website. The header includes navigation links for 'ABOUT US', 'CURRENT PROJECTS', and 'FORECASTS & OUTLOOKS'. Below the header is a search bar and a secondary navigation menu with links for 'Climate Change', 'Colorado River', 'Front Range', 'TreeFlow', 'Hydrology', 'Water Management & Drought', and 'Western Water Law'. The main content area is titled 'BEETLES, WATER, AND CLIMATE - HOME' and features a sidebar with links to 'Beetle Home', 'People & Research', 'References', 'Organizations', 'In the News', and 'Events'. The main text describes the 'Beetles, Water, and Climate (BWC)' project, which is a multi-purpose web resource for researchers and professionals. It includes a photograph of a beetle and a forest. The text also mentions that BWC is part of a WWA-funded project and provides a list of sections: 'People and Research', 'References', 'Organizations', 'Bark beetles in the News', and 'Events'.

Sections:

- People & Research
- References
- Organizations
- In the News
- Events
 - *Today's abstracts*

Goals for the day...

- Share the latest research findings on MPB-water impacts
- Identify gaps in the research and inconsistencies in the results
- Discuss how the science could be made more responsive and applicable to stakeholder needs
- Identify new mechanisms for coordination, synthesis and dissemination of MPB research--if needed