

Colorado Water Conservation Board

December 1, 2005



Colorado Water Conservation Board

- State Water Planning and Policy Agency
- Coordination and Planning
- Dissemination of information



CWCB Programs

- Flood Protection
- Interstate Compacts; Water Supply Protection and Management
- Stream and Lake Protection
- Conservation and Drought Planning
- Water Supply Planning & Finance



CWCB Roles and Interactions

- Coordination and Planning
- Dissemination of information
- Federal, State, and Local Agencies
 - USBR, NRCS, USACE, NWS, NPS, USFS, USFWS, WAPA
 - CWCB, DWR, DNR, DOW, Parks, WQ, Ag
 - Counties, Cities, Special Districts



Interest in forecast products – Flood Protection

- Spring assessment of snowmelt flooding potential
 - Early warning
 - Real-time warning
 - Post-flood assistance
- Flood Task Force
- Drought Task Force
- Flood Insurance
- Cloud-seeding permits



Interest in forecast products - Interstate Compacts & Water Supply

- Interstate Compacts - 22 compacts and agreements with downstream states
- Participation in Endangered Species Recovery Programs
 - Multiple programs
 - Recommended streamflows – spring peak, late summer, base
 - Coordinated reservoir operations
- Assistance for Colorado water managers and users to promote maximum utilization of water



Interest in forecast products – Stream and Lake Protection

- Streamflow and temperature prediction in dry years



Interest in forecast products – Conservation and Drought Planning

- Water supply and streamflow forecasts



Challenges

- 4 River Forecast Centers
- 3 Weather Forecast Offices
- Lack of knowledge of available products
- Lack of agreement about highest priority for new products



Comments - Likes

- AHPS products
- Graphical displays
- Standardization of website products
- CBRFC staff assistance



Suggestions

- Distributed Modeling or other downscaling to provide forecasts for more points and smaller streams
- Outreach and education

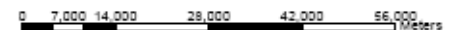
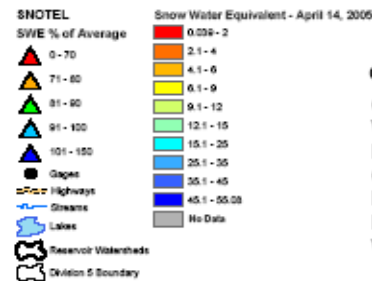
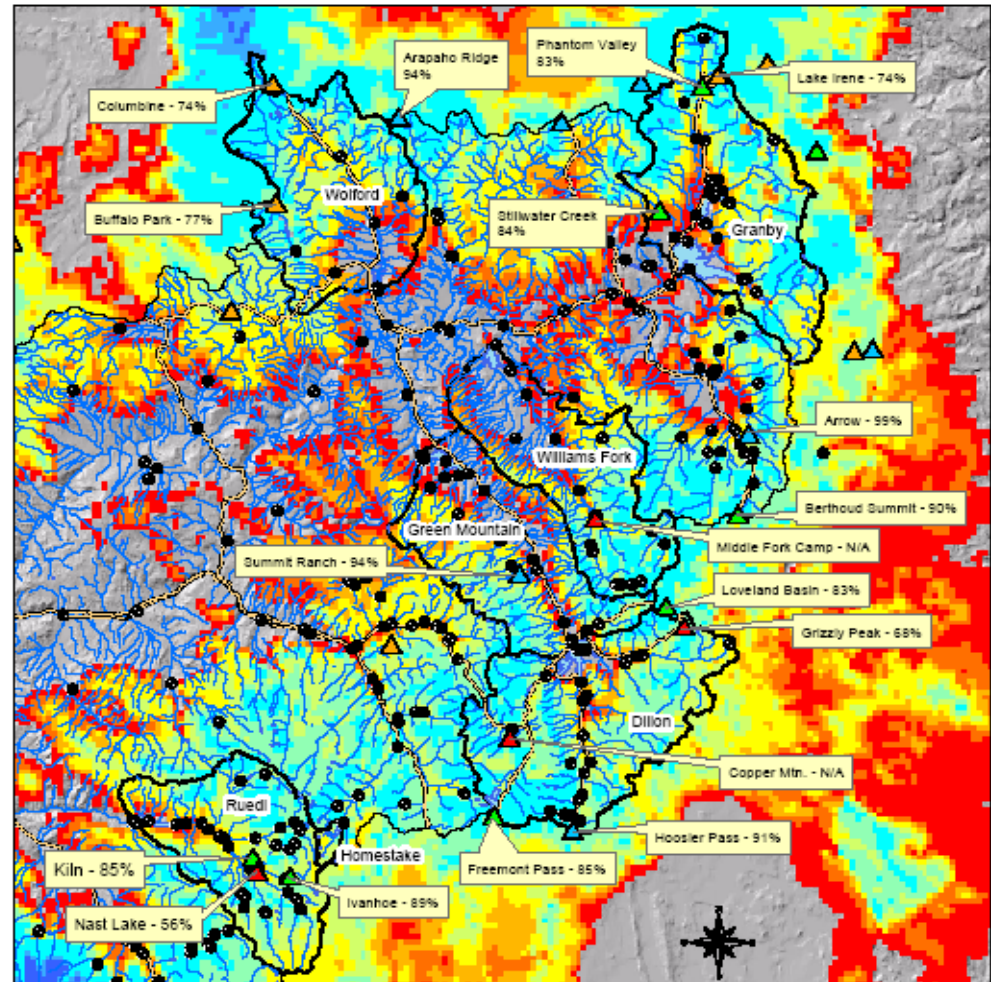


Colorado River Basin Estimated Snow Water Equivalent - April 14, 2005

Spring 2005

CWCB used NOHRSC
SNODAS SWE data to:

- pinpoint areas of possible snowmelt flooding
- estimate potential water supply above key locations



Calculated Water Volume Above Each Reservoir

Granby - 180,145 AF
 Williams Fork - 96,020 AF
 Dillon - 224,288 AF
 Green Mountain - 86,568 AF
 Ruedi - 133,579 AF
 Homestake - 4,623 AF
 Wolford Mountain - 138,990 AF



- Questions?
- More information available at www.cwcb.state.co.us

